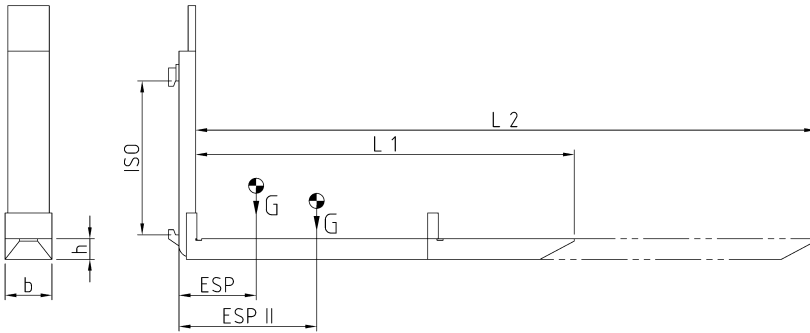


Hydraulic telescopic fork arms

TGZ

The hydraulic telescopic fork arms type TGZ are the ideal solution for many transport and loading applications. Transport vehicles can be loaded and unloaded from one side. The telescopic forks can be supplied with or without pallet stops and arms can be telescoped under load.

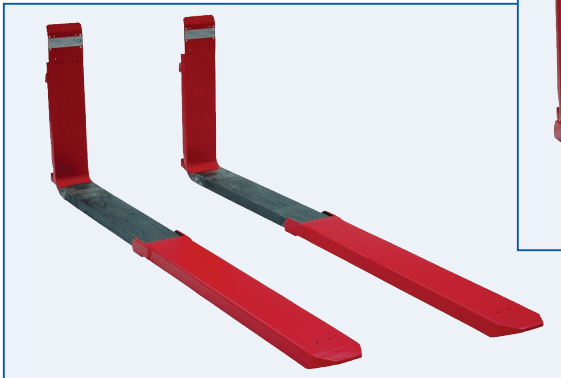
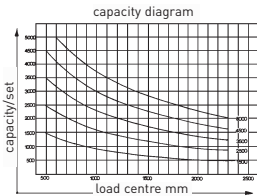


type	lift truck capacity to	capacity per set kg/mm LSP LC	ISO	L1/L2 mm	b x h mm	weight set kg	ESP I/ESP II COG I/COG II mm
TGZ.25.1200	1,0-2,5	2500/600	II	1200/2050	161 x 57	205	395/605
TGZ.25.1350	1,0-2,5	2500/600	II	1350/2350	161 x 57	220	465/710
TGZ.35.1200	3,0-3,5	3500/600	III	1200/2050	161 x 57	210	400/595
TGZ.35.1350	3,0-3,5	3500/600	III	1350/2350	161 x 57	230	465/700
TGZ.45.1200	4,0-4,5	4500/600	III	1200/2050	161 x 57	215	370/565
TGZ.45.1350	4,0-4,5	4500/600	III	1350/2350	161 x 57	235	435/670

- 1 hydraulic function required
- without hoses and couplings

- wear resistant mangan steel stripes (+5 mm) upon request

Please note: standard backrest does not fit with TGZ installed



DURWEN 
Forklift Attachments

More than 60 years experience