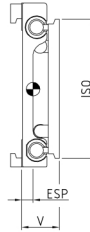
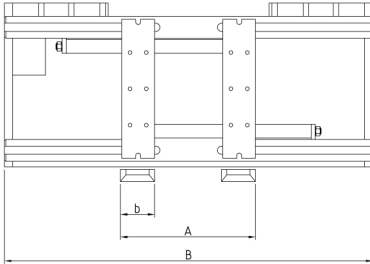


Sideshifting fork positioner

integral sideshift (via valve), no forks

RZV
ISO IV

The **sideshifting fork positioner type RZV** uses stable tube guides for positioning of fork adaptors. The simple design offers reliability and excellent operator visibility. Hook-on forks can be used. The integral sideshift is depending on fork position.

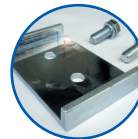
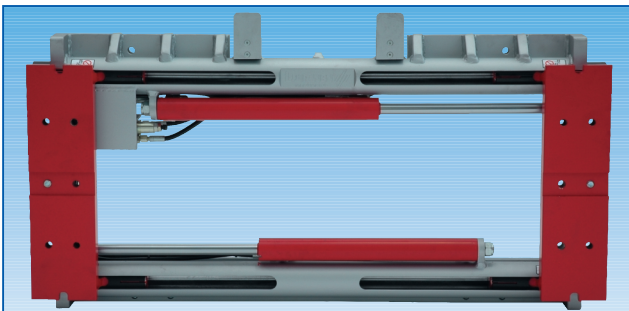


type	lift truck capacity tons	capacity kg/mm LC	ISO	B mm	opening range A mm	b mm	V LLC mm	ESP COG mm	weight kg
RZV 50	4,5-5,0/500	5000/600	IV	1250	490-1330	150	160	68	292
				1350	490-1430			68	305
				1450	490-1530			68	318
RZV 60	5-6,0	6000/600	IV	1460	560-1560	150	165	72	450
				1860	560-1960			72	530
RZV 80	7-8,0/600	8000/600	IV	1800	560-1900	200	165	75	525
				1860	560-1960			75	535
				2000	560-2100			75	538
				2060	560-2160			75	540
				2260	560-2360			75	590
				2400	560-2500			75	635
RZV 100	8/900	8000/900	IV	2060	560-2160	200	190	70	700
				2260	560-2360			70	750
				2400	560-2500			70	810
RZV 110	9,0/900 8,0/1100	8000/1100	IV	2060	560-2160	200	192	73	715
				2260	560-2360			73	765
				2400	560-2500			73	825

- Includes hoses and couplings
- 2 hydraulic functions required

- Clamping of goods not allowed / possible
- Load backrest see accessories

- If no sideshift requires indicate on your order



fork retainer

DURWEN 
Forklift Attachments

More than 60 years experience