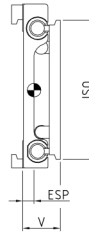
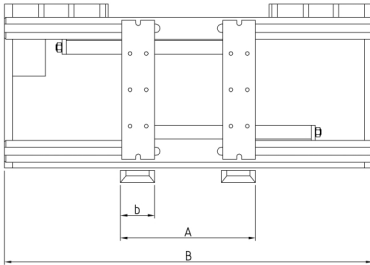


Sideshifting fork positioner

integral sideshift (via valve), no forks

The **sideshifting fork positioner type RZV** uses stable tube guides for positioning of fork adaptors. The simple design offers reliability and excellent operator visibility. Hook-on forks can be used. The integral sideshift is depending on fork position.

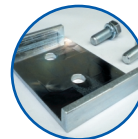
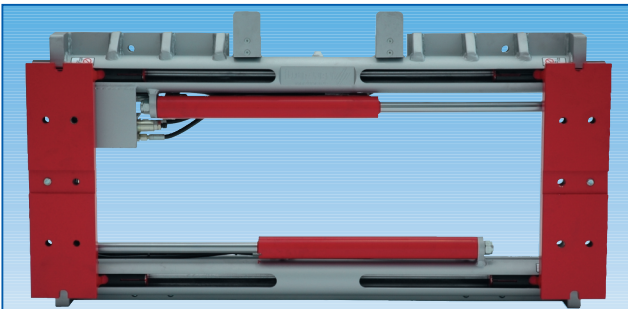


type	lift truck capacity tons	capacity kg/mm LC	ISO	B mm	opening range A mm	b mm	V LLC mm	ESP COG mm	weight kg
RZV 25	1,5-2,5	2500/500	II	980	490-1060	120	126	45	109
				1000	490-1080			45	111
				1040	490-1120			45	118
				1100	490-1180			48	126
				1150	490-1230			50	130
				1200	490-1280			50	135
				1350	490-1430			50	140
RZV 30	3,0	3000/500	III	1040	490-1120	125	138	55	145
				1100	490-1180			57	153
				1150	490-1230			60	160
				1200	490-1280			60	166
				1350	490-1430			60	175
RZV 35	3,5	3500/500	III	1100	490-1180	140	138	65	162
				1150	490-1230			65	165
				1200	490-1280			65	194
				1350	490-1430			65	203
RZV 45	4,0-5/600	5000/600	III	1150	490-1230	150	153	70	205
				1200	490-1280			70	208
				1250	490-1330			70	212
				1300	490-1380			70	215
				1350	490-1430			70	220
				1450	490-1530			70	228
				1550	490-1630			70	235

- Includes hoses and couplings
- 2 hydraulic functions required

- Clamping of goods not allowed / possible
- Load backrest see accessories

- If no sideshift requires indicate on your order



fork retainer