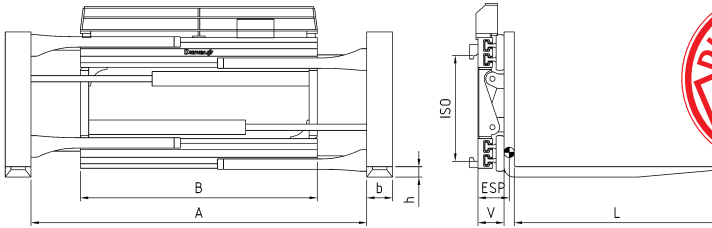


Fork clamp

integral sideshift, bolt-on forks

The **fork clamp PGK** can spread the forks beyond the attachment frame width. It can carry loads on the forks as well as clamped between the forks. The strong steel profiles allow for excellent visibility and minimised lost load centre. A integral sideshift is included as well as bolt-on forks.



| type | lift truck capacity tons | ISO | capacity on forks kg/mm LC | capacity as clamp kg/mm LC | A opening range ITI mm | B mm | forks b x h x l mm | V LLC mm | ESP COG mm | weight kg |
|---------|--------------------------|-----|----------------------------|----------------------------|------------------------|------|--------------------|----------|------------|-----------|
| PGK 50 | 5,0 | IV | 4800/600 | 3500/600 | 250-1600 | 1250 | 150x70x1200 | 158 | 250 | 725 |
| | | | | | 250-1700 | 1350 | | | 245 | 750 |
| | | | | | 250-1800 | 1450 | | | 230 | 775 |
| | | | | | 250-1900 | 1550 | | | 220 | 800 |
| | | | | | 250-2150 | 1800 | | | 210 | 865 |
| PGK 60 | 6,0 | IV | 6000/600 | 3800/600 | 250-1650 | 1300 | 150x70x1200 | 158 | 235 | 830 |
| | | | | | 250-1800 | 1450 | | | 220 | 860 |
| | | | | | 250-2150 | 1800 | | | 205 | 940 |
| | | | | | 250-2350 | 2000 | | | 205 | 1000 |
| PGK 80 | 7,0-8,0 | IV | 8000/600 | 4800/600 | 160-1500 | 1350 | 200x70x1200 | 167 | 245 | 1250 |
| | | | | | 160-2150 | 2000 | | | 220 | 1380 |
| | | | | | 160-2350 | 2200 | | | 215 | 1440 |
| | | | | | 160-2550 | 2400 | | | 210 | 1510 |
| PGK 100 | 8,0/900 9,0/600 | IV | 8000/900 | 7500/600 | 160-2000 | 2000 | 250x80x1200 | 177 | 230 | 1610 |
| | | | | | 160-2100 | 2100 | | | 225 | 1650 |
| | | | | | 160-2200 | 2200 | | | 220 | 1690 |
| | | | | | 160-2400 | 2400 | | | 215 | 1770 |
| PGK 110 | 8,0/1100 | IV | 8000/1100 | 8000/600 | 160-2060 | 2200 | 250x90x1200 | 187 | 230 | 2380 |

- features bolt-on forks as standard
- includes hoses and couplings
- 2 hydraulic functions required
- slip on arms see accessories
- cylinder protection upon request

