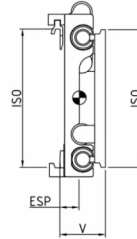
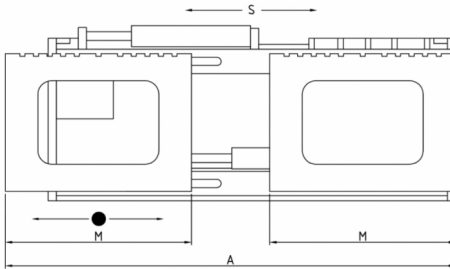


Double sideshift, 2 pallets

DST 1-0

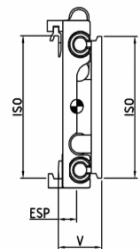
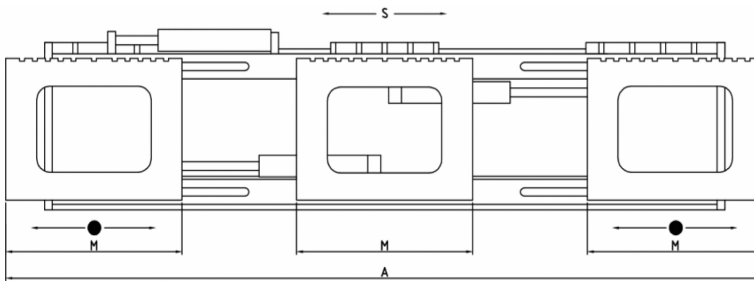


type	capacity kg/mm LC	lift truck capacity tons	ISO mm	A mm	M mm	S mm	ESP COG mm	V LLC mm	weight kg
DST 25-1-0	2500/500	2,5	II	1500-1700	720	+/- 100	81	155	275
DST 25-1-0	2500/500	2,5	II	1980-2180	980	+/- 100	84	155	315
DST 50-1-0	5000/500	5,0	III	1500-1700	720	+/- 100	83	168	345
DST 50-1-0	5000/500	5,0	III	1980-2260	980	+/- 100	87	168	395
DST 80-1-0	8000/600	8,0	IV	1500-1700	720	+/- 160	88	182	530
DST 80-1-0	8000/600	8,0	IV	1980-2260	980	+/- 160	94	182	655

- 2 hydraulic functions required
- forks not included, bolt-on forks upon request
- left plate fixed
- includes hoses and couplings

Triple sideshift, 3 pallets

DST 1-0-1



type	capacity kg/mm LC	lift truck capacity tons	ISO mm	A mm	M mm	S mm	ESP COG mm	V LLC mm	weight kg
DST 50-1-0-1	5000/500	5,0	III	2160-2720	720	+/- 100	88	168	550
DST 50-1-0-1	5000/500	5,0	III	2940-3500	980	+/- 100	92	168	615
DST 80-1-0-1	8000/600	8,0	IV	2160-2720	720	+/- 160	91	182	720
DST 80-1-0-1	8000/600	8,0	IV	2940-3500	980	+/- 160	96	182	825

- 2 hydraulic functions required
- solenoid valve or flow divider to your choice
- includes hoses and couplings
- forks not included, bolt-on forks upon request
- centre plate fixed, outer plates moving

DURWEN 
Forklift Attachments

More than 60 years experience