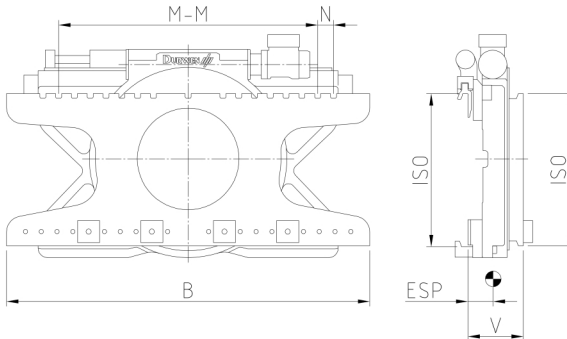


# Sideshifting 360 ° rotator

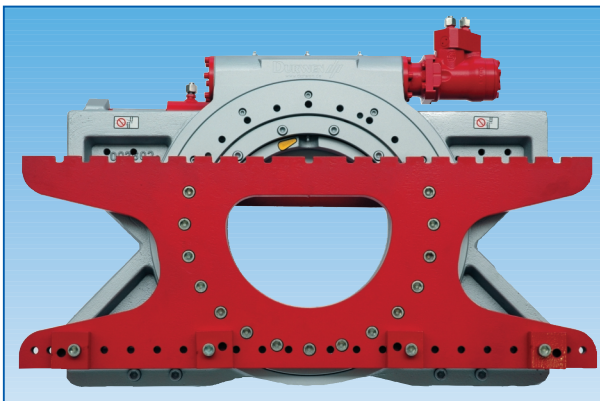
## DG-S

The rotator type **DG-S** has a cast steel frame enabling compact design. The worm gear has several teeth meshing at one time thus helping to increase the service life of the attachment. A seal fitted as standard protects the rotator against the ingress of dirt and dust. DG-S is equipped with constant sideshift +/-100 mm.



type	capacity kg/mm LC	lift truck capacity tons	ISO	width B mm	max. torque $\Delta P$ 100 bar Nm	centre distance M - M mm	N mm	sideshift mm	V LLC mm	ESP COG mm	weight kg
DG 16-S	1600/500	1,5-1,8	II	880	5200	260-660	50	+/- 100	166	80	264
DG 20-S	2000/500	2,0	II	980	5200	260-760	50	+/- 100	166	82	270
DG 25-S	2500/500	2,5	II	1100	9400	260-860	50	+/- 100	150	80	330
DG 30-S	3000/500	3,0	III	1150	9400	320-920	50	+/- 100	175	85	394
DG 35-S	3500/500	3,5	III	1150	11700	320-920	50	+/- 100	180	87	409
DG 45-S	5000/500	4,5-5,0-500	III	1350	14000	320-1120	50	+/- 100	193	94	530
DG 50-S	5000/600	5,0-600	IV	1350	14000	310-1010	50	+/- 100	208	110	645
DG 60-S	6000/600	6,0	IV	1500	22000	310-1210	50	+/- 100	225	138	794
DG 80-S	8000/600	7,0-8,0	IV	1750	22000	310-1510	50	+/- 100	230	143	852
DG 100-S	8000/900	8,0/900	IV	1750	26000	310-1510	50	+/- 100	255	165	995

- foundry/fishing version see rotator options
- includes hoses and couplings
- 2 hydraulic function required
- hook-on forks reinforced for rotator use must be used.
- quick release hooks: class 2, class 3, class 4 upon request



**DURWEN**   
Forklift Attachments

More than 60 years experience